



Toronto Avenue, London, , E12 5JF £2,200 PCM

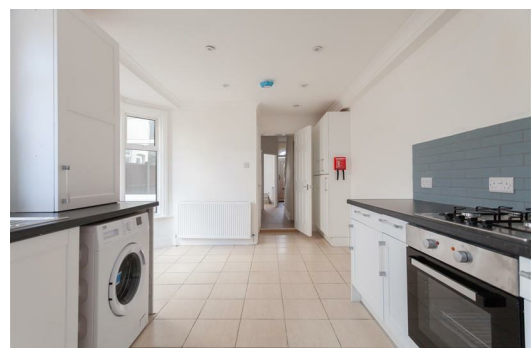
Elms Estates are Hugely Excited to be able to offer To Let this Newly Refurbished Four Double Bedroom Mid Terraced House with Two Reception Rooms.

Toronto Avenue is located just off of Romford road within easy reach of Manor Park Station (Elizabeth Line) with multiple bus routes. Easy access to A406 Dual Carriageway. Within walking distance of local shops and amenities. Additionally the open spaces of Wanstead Flats are just a short walk away ideal for scenic strolls.

Internally the property has been newly refurbished and benefits from a fitted kitchen/diner, two separate reception rooms, ground floor WC, first floor family bathroom and four good sized double bedrooms.. The property has been redecorated throughout with fresh paintwork and new carpets and laminate flooring.

Toronto Avenue is available for immediate occupation. An early internal inspection is highly recommended in order to avoid disappointment.

For more information or to arrange a viewing please do not hesitate to call in and speak with one of our Property Consultants.



Reception Room
13'1" x 12'1" (4.0 x 3.7)

Dining Room
11'1" x 9'10" (3.4 x 3.0)

Kitchen
18'8" x 11'5" (5.7 x 3.5)

W/C

Bedroom One
15'8" x 9'6" (4.8 x 2.9)

Bedroom Two
10'5" x 8'6" (3.2 x 2.6)

Bedroom Three
10'2" x 8'6" (3.1 x 2.6)

Bedroom Four
9'6" x 8'2" (2.9 x 2.5)

Bathroom

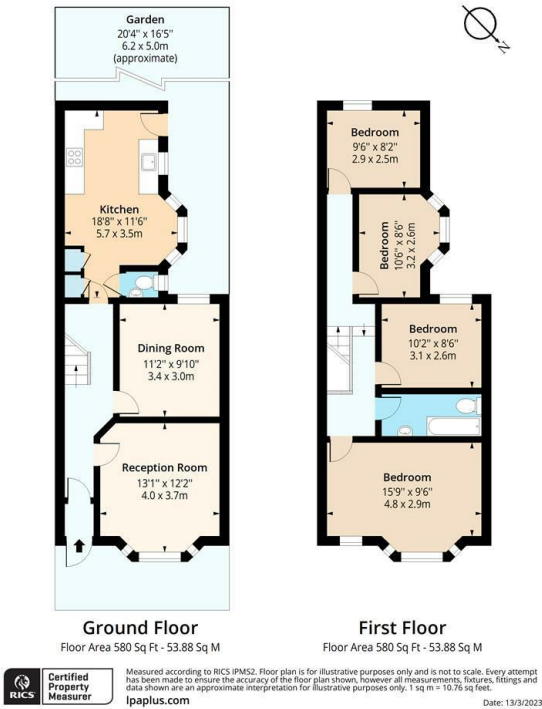
Garden

Material Information

Deposit: £2,538.46
Length Of Tenancy: One Year
Council Tax Band: C



Toronto Avenue, E12
Approx. Gross Internal Area 1160 Sq Ft - 107.76 Sq M



Energy Efficiency Rating			Environmental Impact (CO ₂) Rating		
Very energy efficient - lower running costs	Current	Potential	Very environmentally friendly - lower CO ₂ emissions	Current	Potential
(92 plus) A			(92 plus) A		
(81-91) B			(81-91) B		
(69-80) C			(69-80) C		
(55-68) D			(55-68) D		
(39-54) E			(39-54) E		
(21-38) F			(21-38) F		
(1-20) G			(1-20) G		
Not energy efficient - higher running costs			Not environmentally friendly - higher CO ₂ emissions		
England & Wales	EU Directive 2002/91/EC		England & Wales	EU Directive 2002/91/EC	